

IS-480 – Loading Rates

The following condition must be met before loading rates:

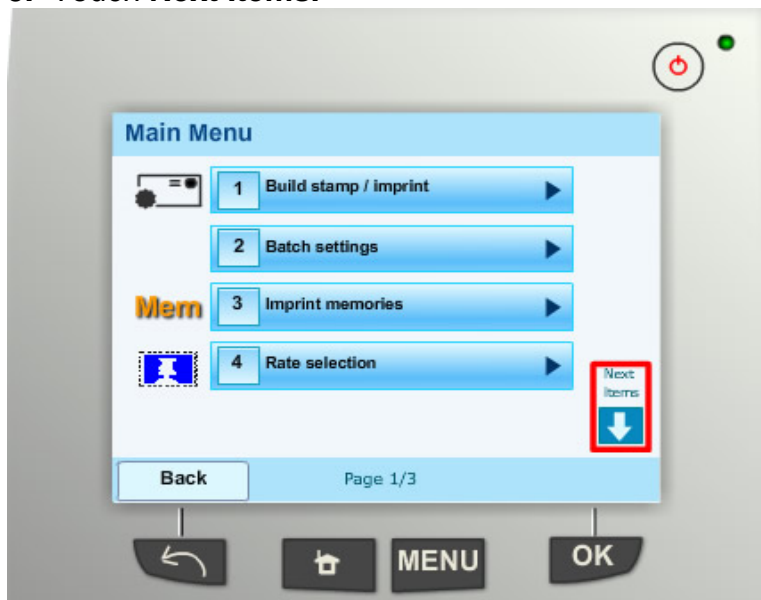
- The customer must have a rate protection plan.
- The machine must be declared.

Loading Rates:

1. Turn the IS-480 off by switching the ON/OFF button to the OFF position.
2. Disconnect the power cord plug from the wall outlet, wait 10 seconds, then re-insert the power cord plug into the wall outlet.
3. Turn the IS-480 on by switching the ON/OFF button to the ON position.
4. Press the **MENU** button.

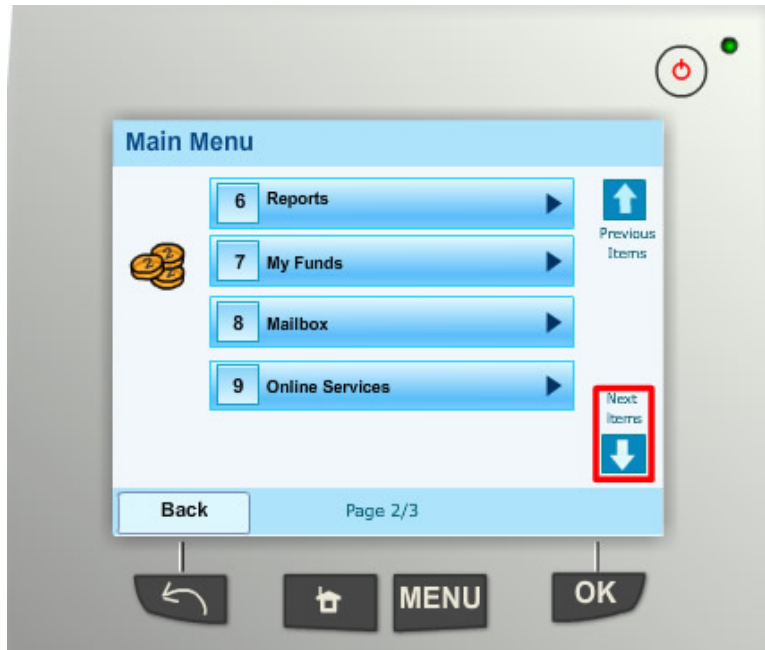


5. Touch **Next Items**.

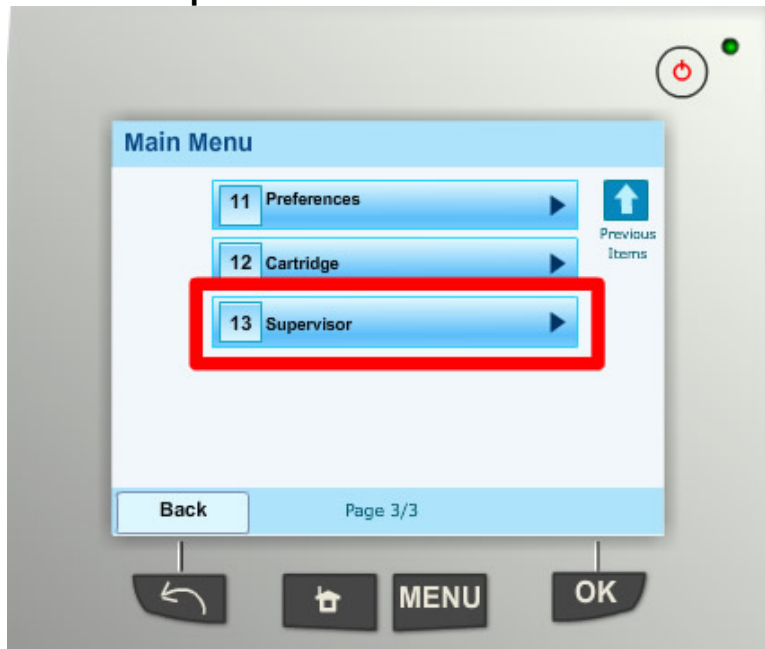


Limitations of this Document

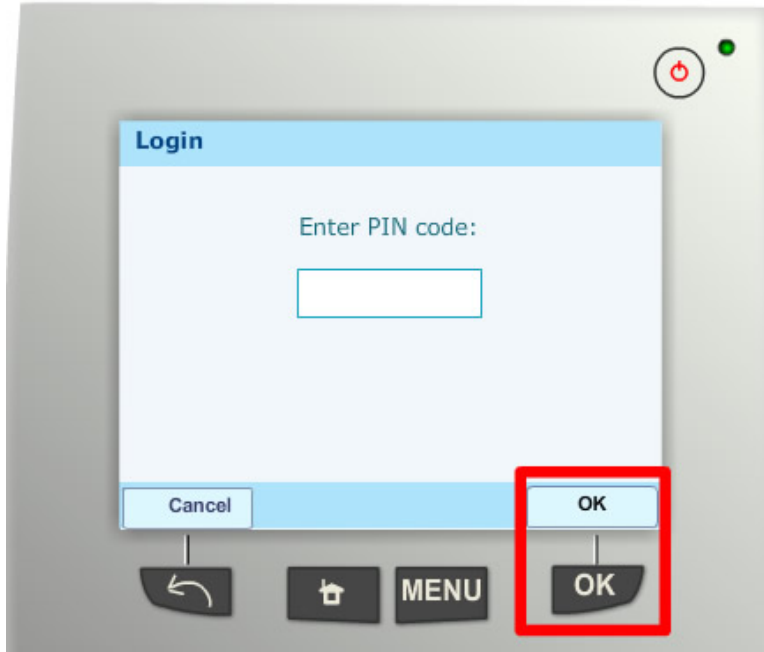
6. Touch **Next Items**.



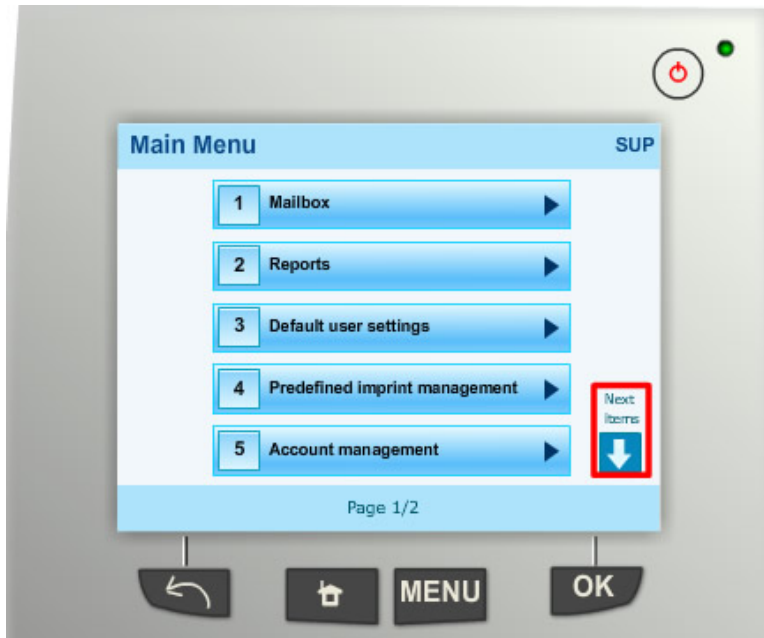
7. Select **Supervisor**.



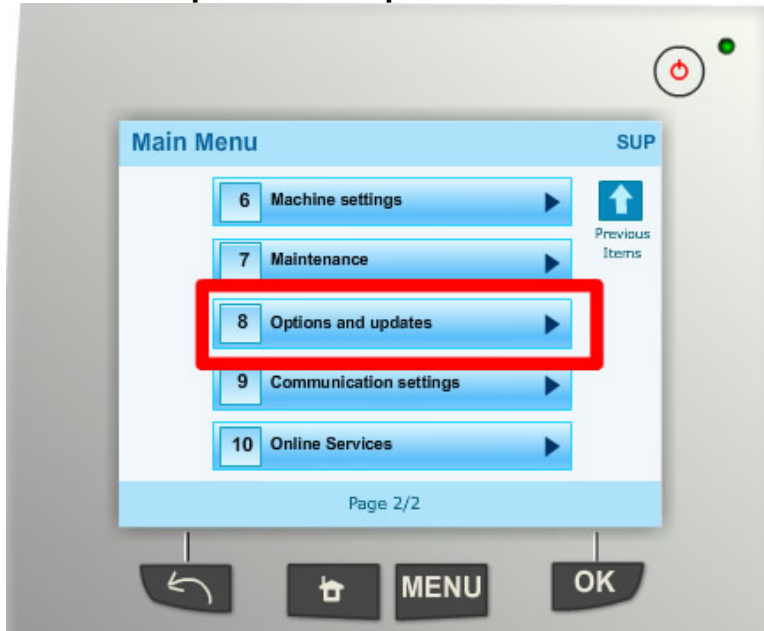
8. Using the numeric keypad, enter the Supervisor PIN Code, **09430**.
- Touch or press **OK**.



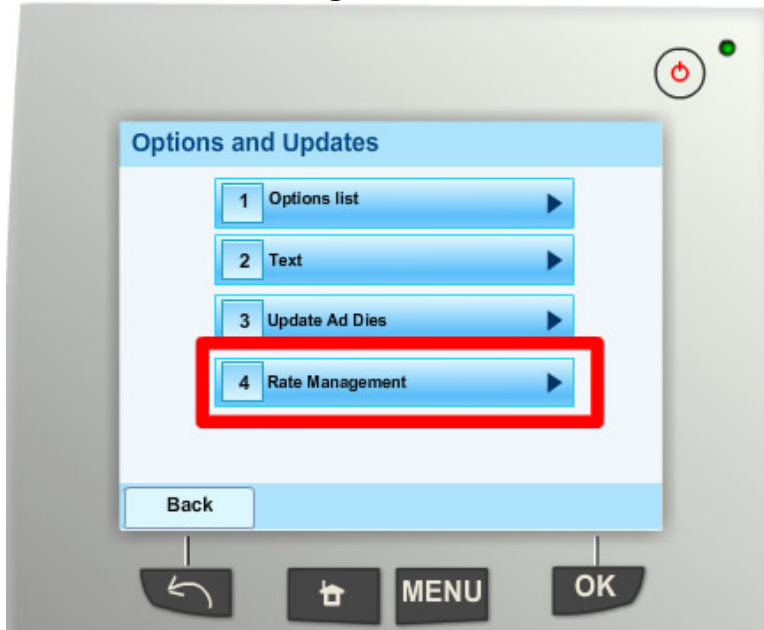
9. Touch **Next Items**.



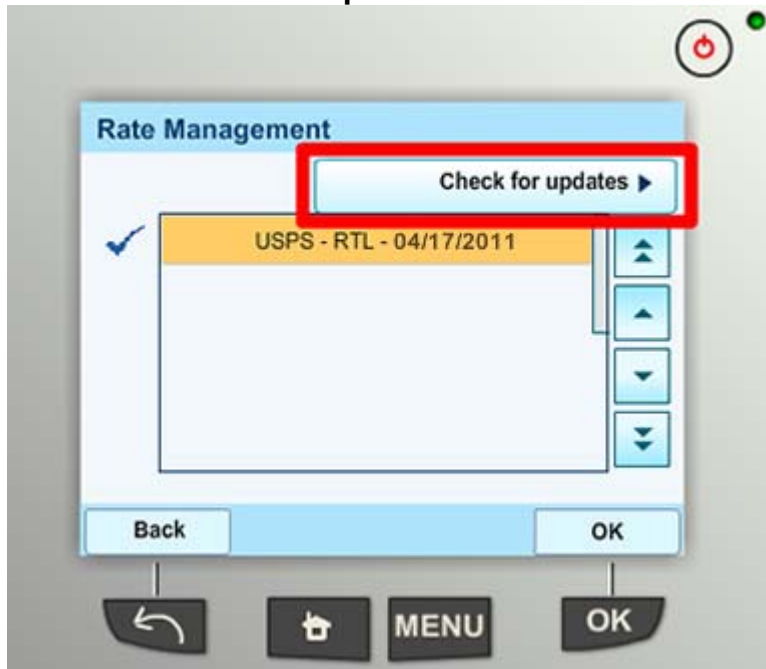
10. Select Options and Updates.



11. Select Rate Management.



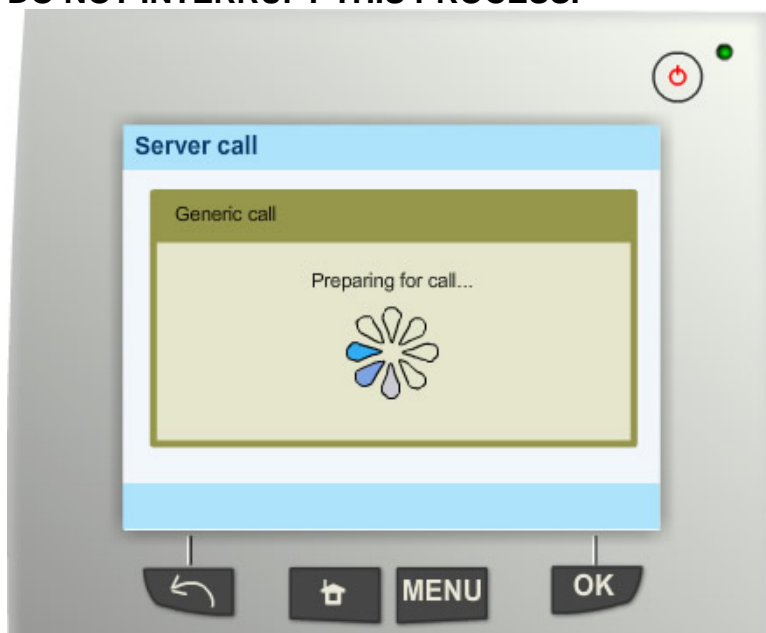
12. Touch **Check for updates**.



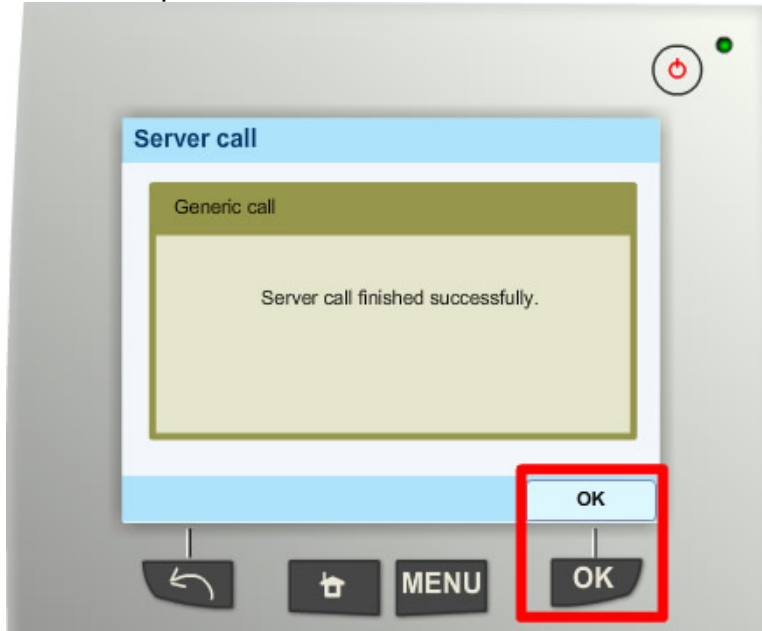
13. The following Generic Call screens will be displayed:

- Preparing for the call
- Dialing the call
- Transaction in progress

DO NOT INTERRUPT THIS PROCESS.



14. The Generic Call finished and the rates loaded successfully.
- Touch or press **OK**.



15. The current rates are indicated by the check mark.
- The new rates, **USPS – RTL – 04/17/2011**, will become active on the effective date.
- Touch or press **OK** to return to the Homescreen.

