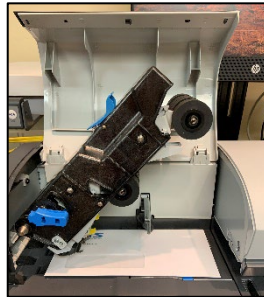
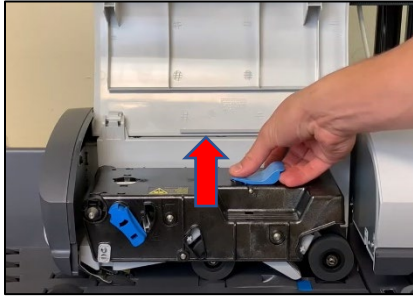


How To Clear Jams In Your Mail Machine

From the Feeder (Left Side)

1. Lift up feeder cover
2. Lift up on the blue lever on top of the drive box



3. Remove jammed material
4. Close drive box until it snaps into place
5. Close the feeder cover

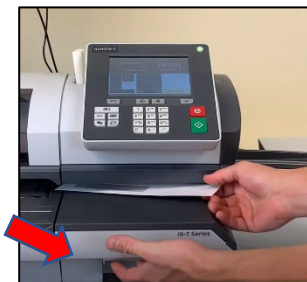
From The Dynamic Scale (Middle Section)

1. Lift up the clear cover
2. Remove jammed material from underneath the flaps
3. Close the cover



From the Base (underneath the display)

1. Pull up on lever underneath the deck of the unit to release the drive belt



2. Clear Material
3. Release the lever